

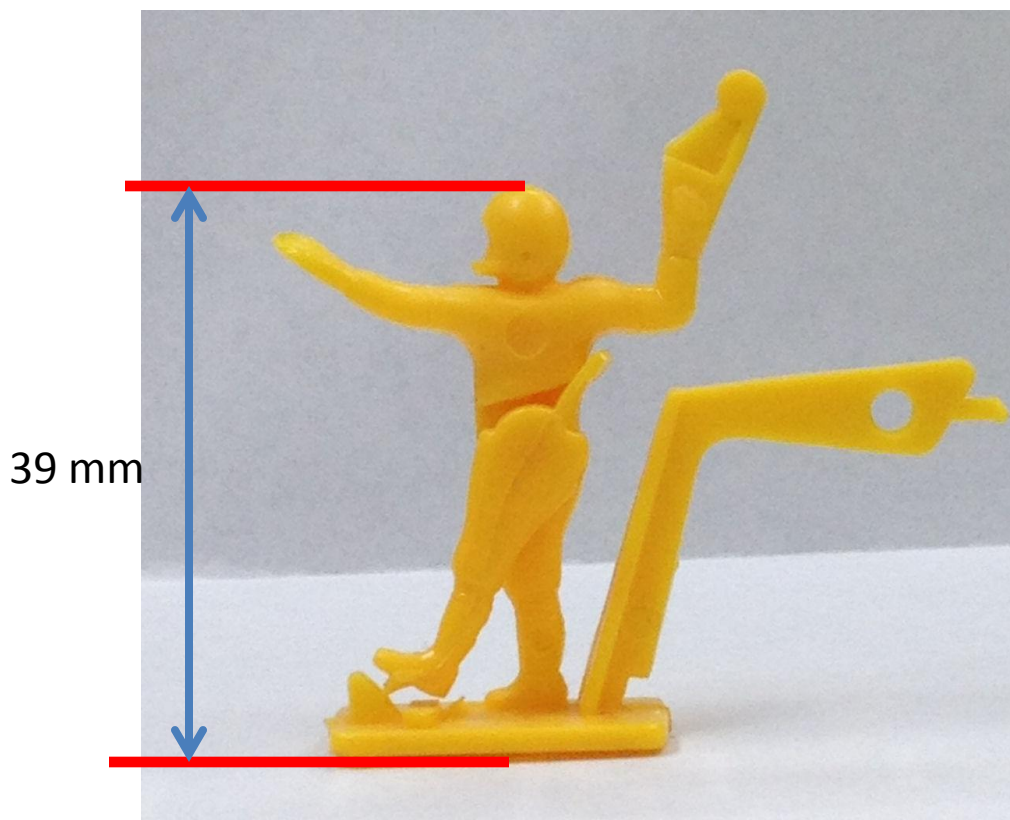


MFCA TOC Figure & Base Standards





Height of Figure Standard



Using the standard Triple Threat Quarterback (TTQB) a player shall not exceed the height of the TTQB bottom of the platform to top of the head which is 39mm



Width of Figure Size Standard



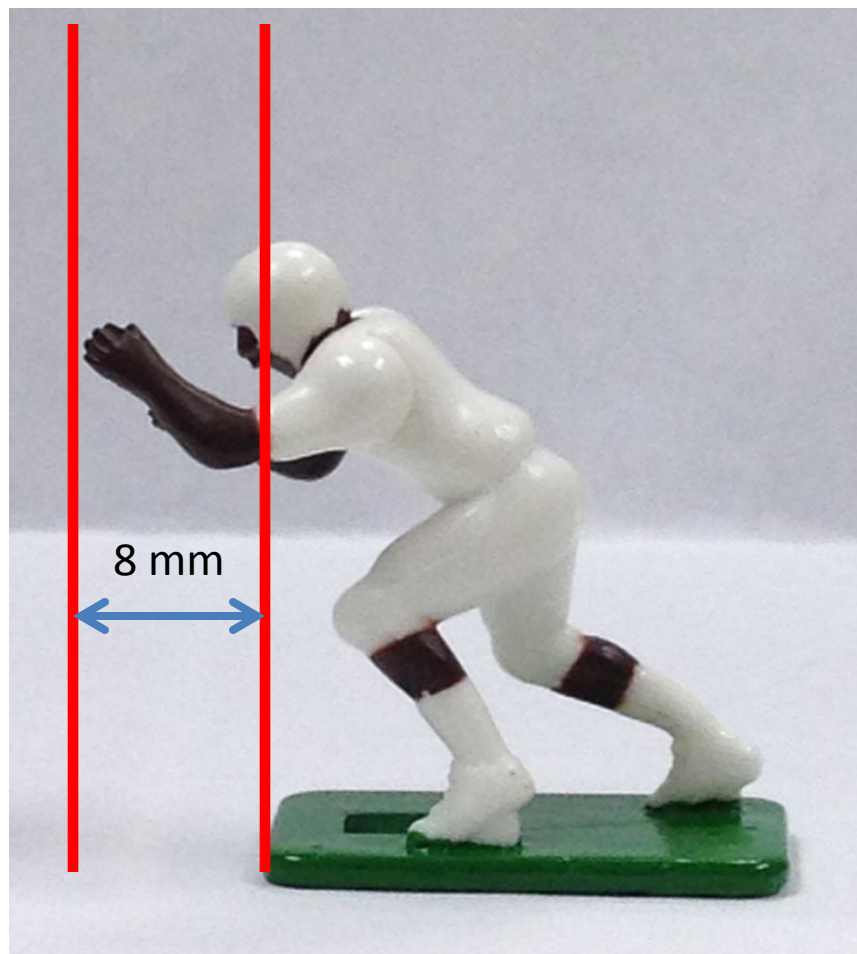
The width of a figure shall not exceed 36mm when measured fingertip-to-fingertip.

In this example the 67 big man measures within the 36 mm measurement.

Figure must be scale proportional to a human.



Extension of Figure over Front of Base Standard



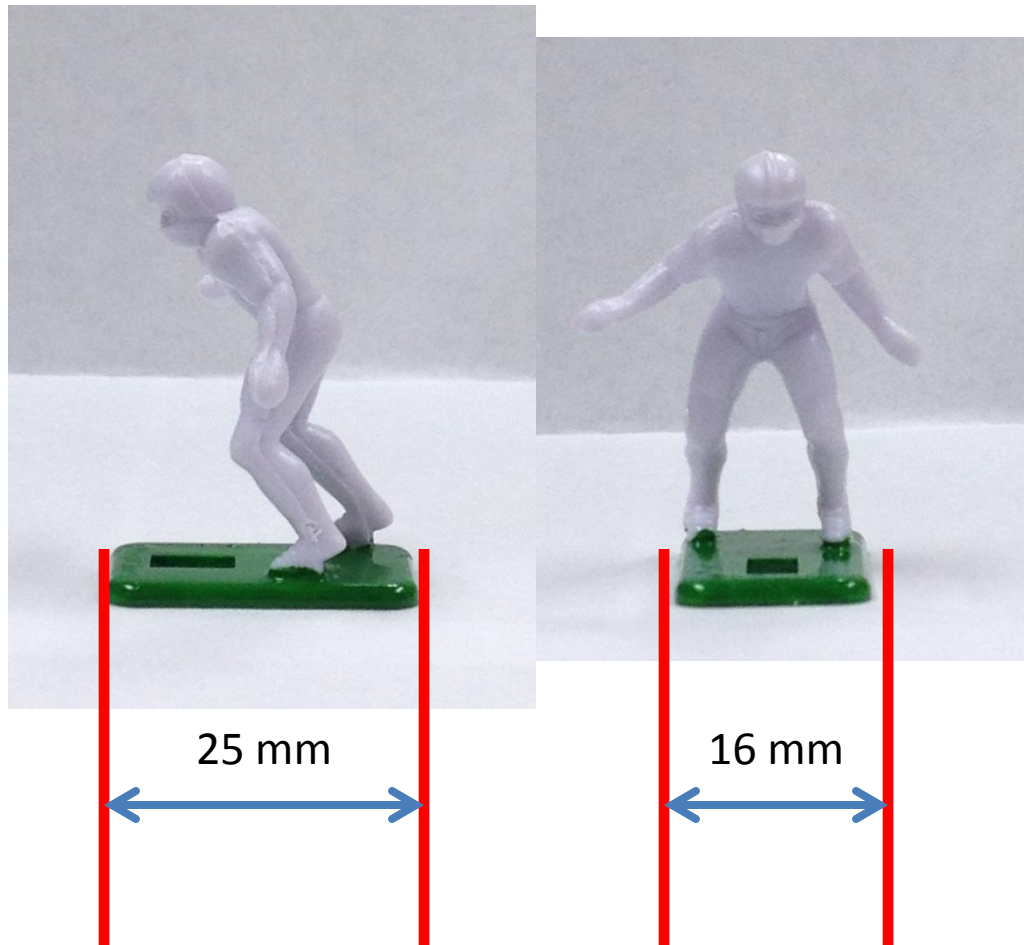
A figure shall not extend beyond 8mm from the front of the figure's platform.

In this example the figure is within the 8mm measurement.

8mm = 5/16"

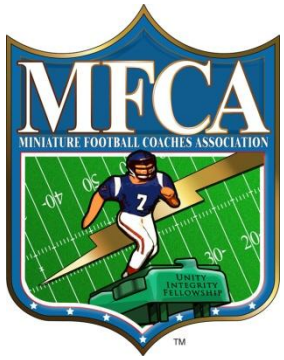


Player Platform Standards

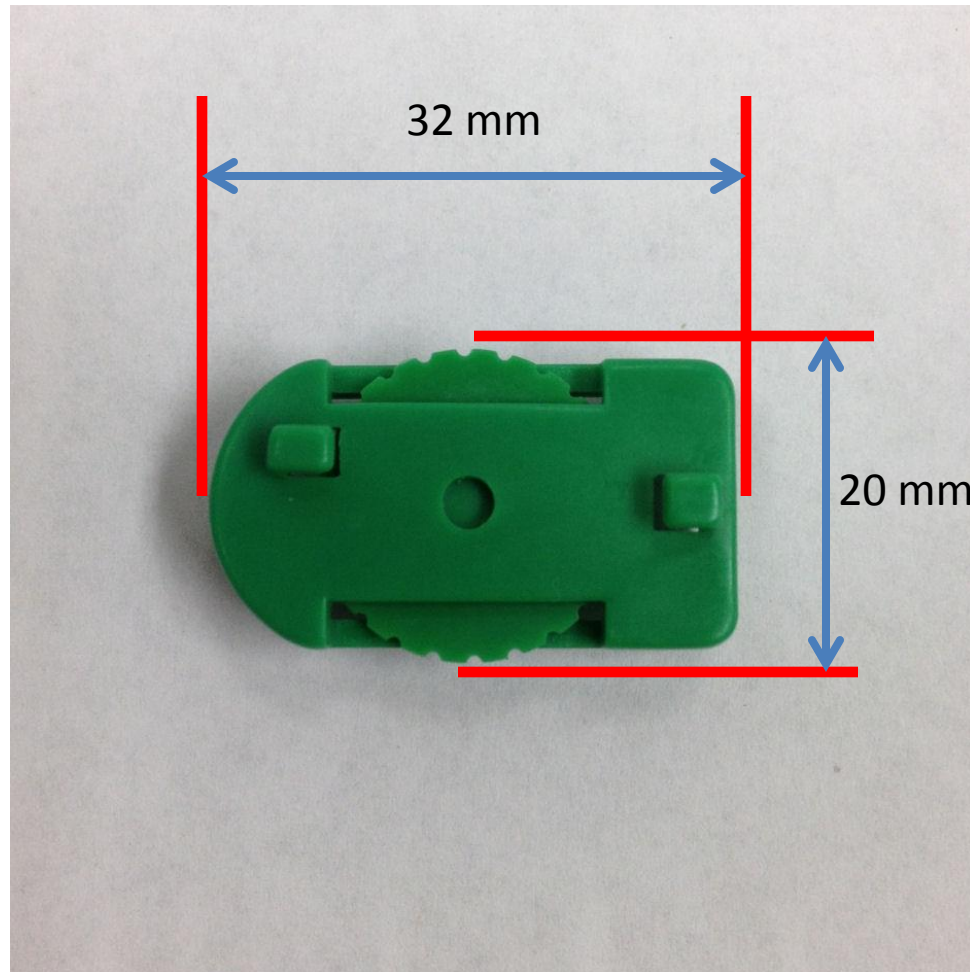


The Platform of a figure shall not exceed 25mm in length.

The Platform of a figure shall not exceed 16mm in width.



Base Size Maximum dimensions

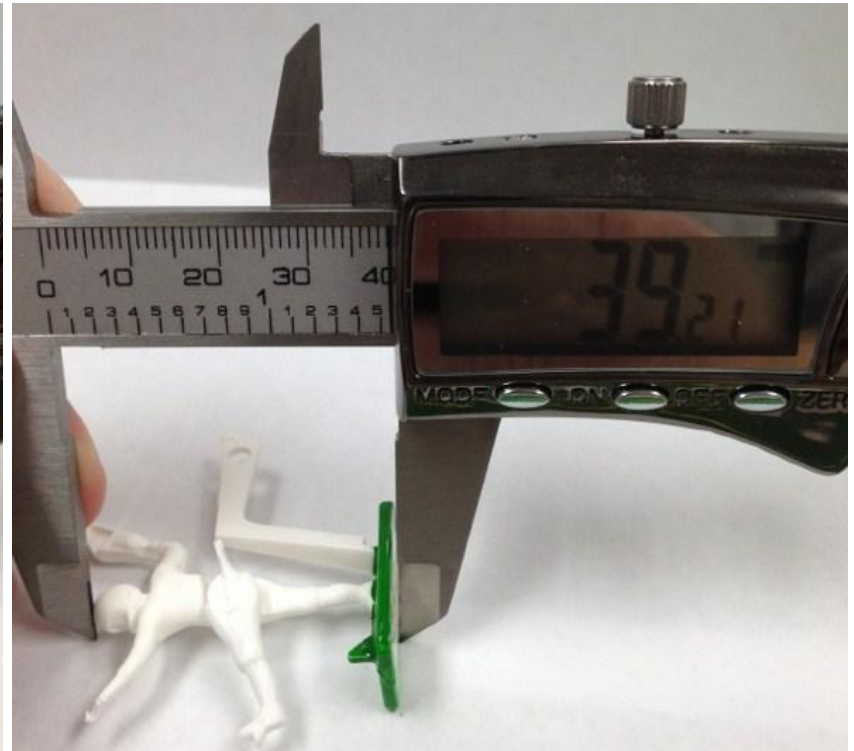
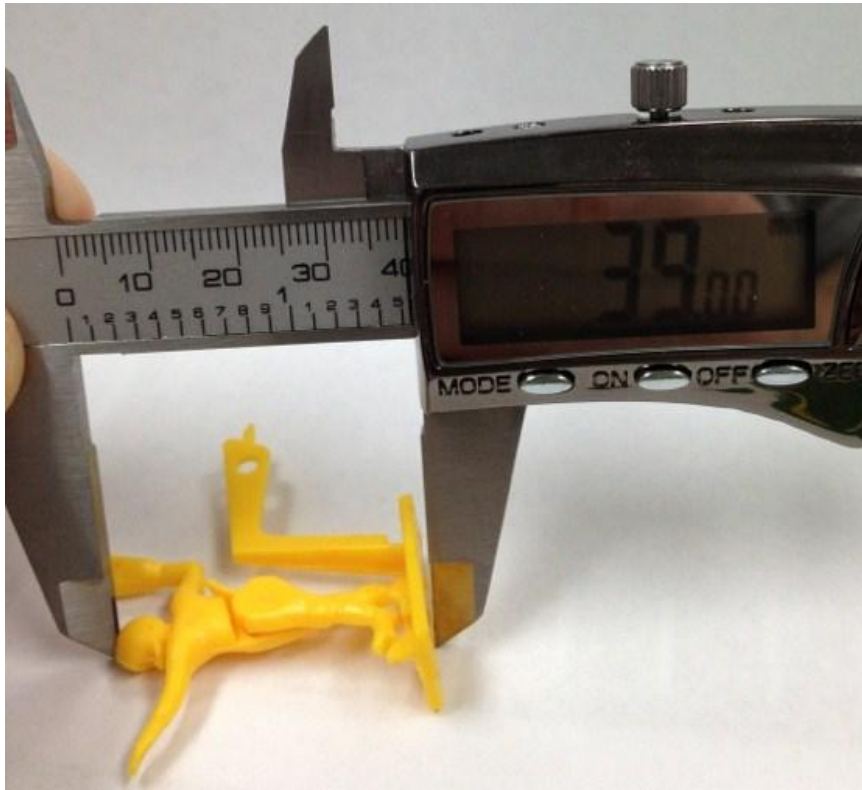


A base shall not exceed 32 mm in length and shall not exceed 20mm in width.

This example is the largest acceptable base.



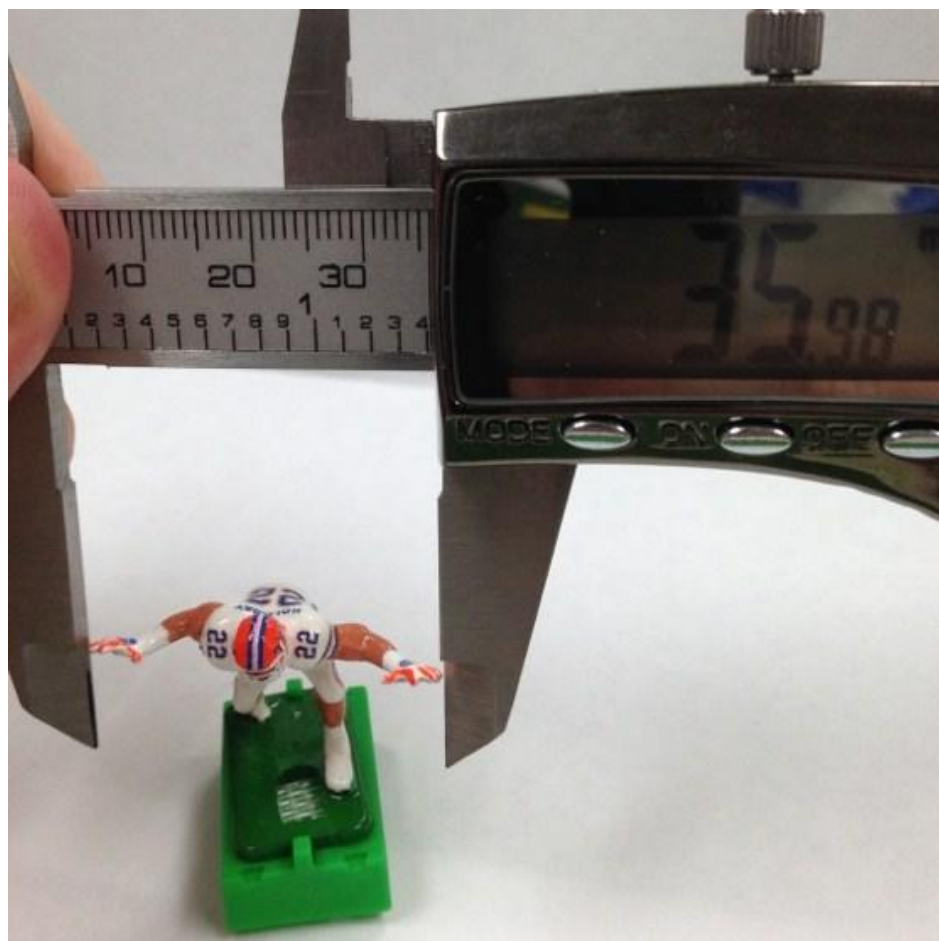
Supporting Measurements with a micrometer



TTQB Height = Max height of any figure



Supporting Measurements with a micrometer



Max Figure Width fingertip-to-fingertip



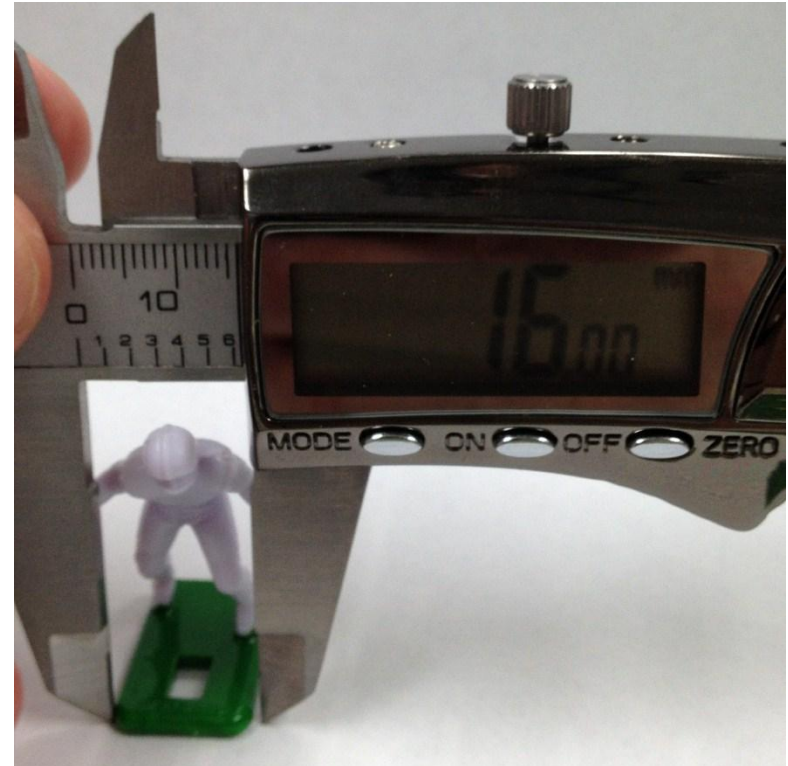
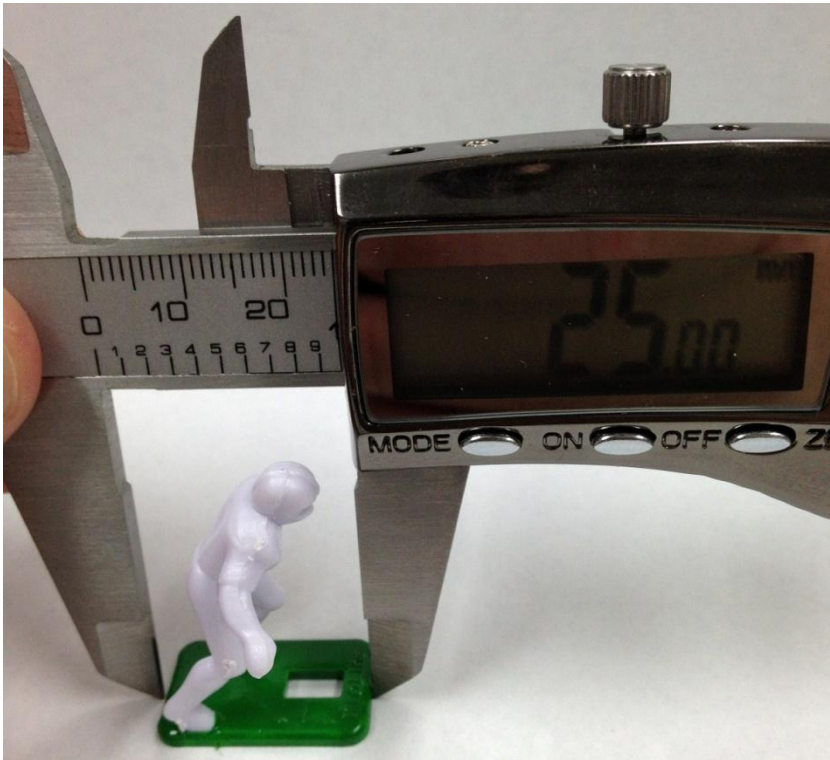
Supporting Measurements with a micrometer



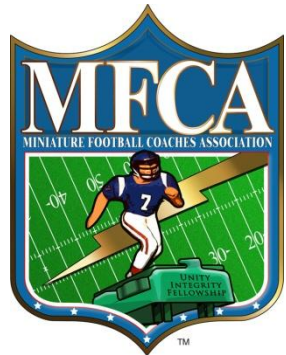
Max Figure Over front of base inches and millimeters shown



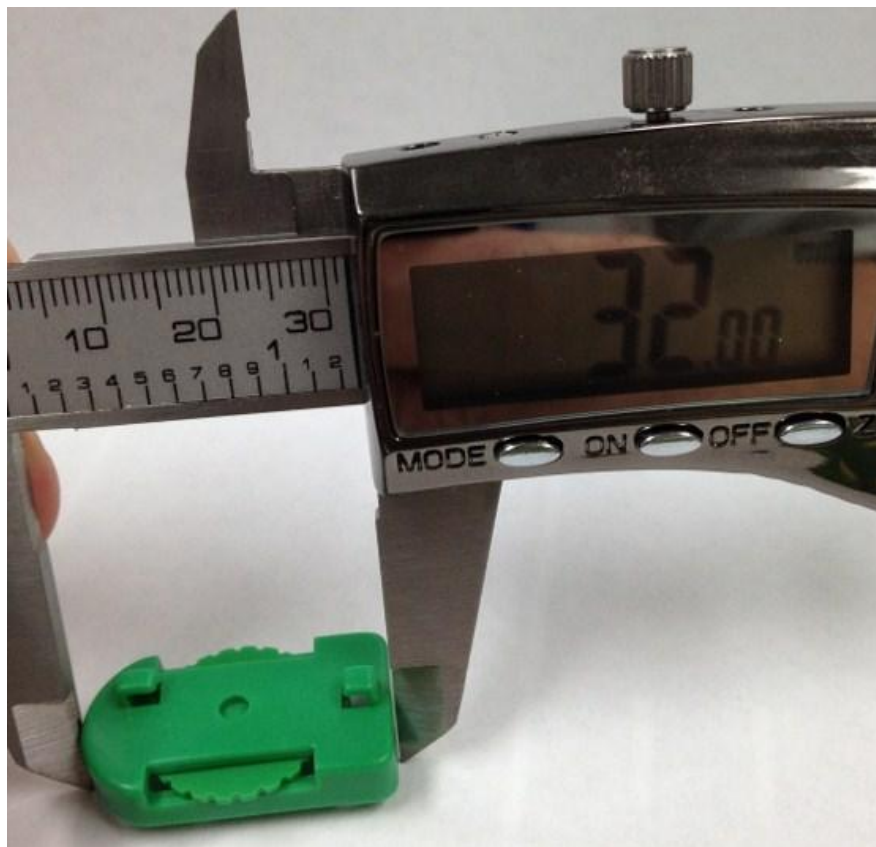
Supporting Measurements with a micrometer



Max Figure Platform Length and Width



Supporting Measurements with a micrometer



Max Base Length and Width